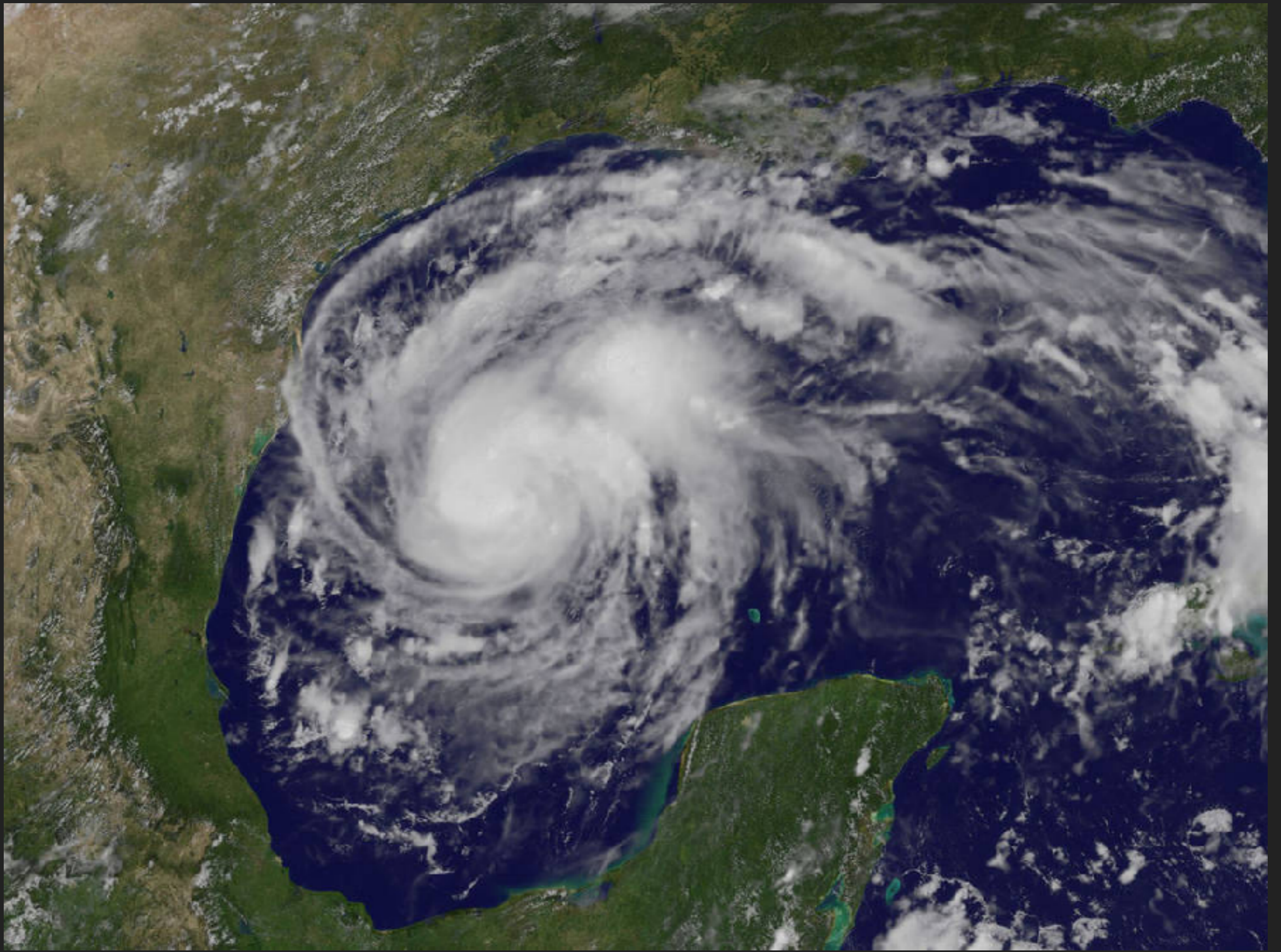


**CASEY PATRICK MD**

**APRIL 25TH, 2018**

---

**USEFUL WITHOUT MY TOOLS**



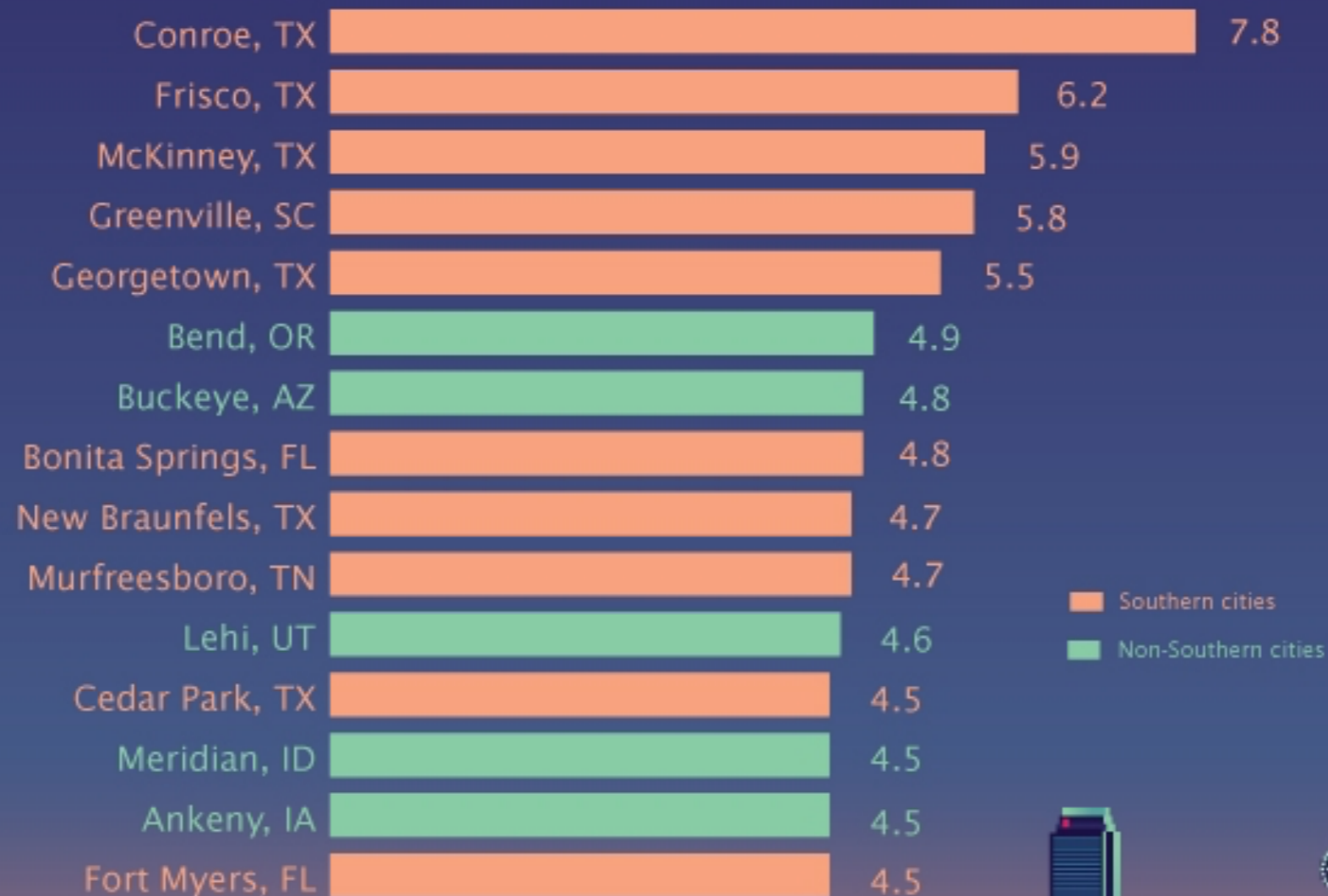
---

# MONTGOMERY COUNTY EMS

- ▶ Municipal EMS service
- ▶ 60k runs/year
- ▶ 1100 square miles (Rhode Island)
- ▶ 200+ paramedics

# Southern Cities Growing Quickly

The 15 Fastest-Growing Large Cities by Percent Change  
Between July 1, 2015, and July 1, 2016



Note: Graphic displays percent change for fastest-growing cities and towns with populations of 50,000 or more on July 1, 2015.



# LiveSlides web content

To view

**Download the add-in.**

[liveslides.com/download](https://liveslides.com/download)

**Start the presentation.**













North

Dr. Baker 294-6271  
11143

✓ Lone Star - Full - Red Cross

Salvation Army - Red Cross

✓ Tree of Life

✓ Sacred Heart - Conroe

✓ Lone Star Family Health

✓ Lat 2 Joshi 936-523-5247  
Underover - Red Cross

South

✓ St. Simon St. Jude - Red Cross

✓ Fellowship of the Woodlands 832-477-5361  
Paul Guerra

Real Estate Help Center

Church Project

East

Bull Salas - Red Cross ✓

Victory Christian ✓  
-40 Exp Hrs. Michah Stewart 803-468-5242  
Pastor Marcus Stewart 281-357-4667

First Baptist Porter - Wendy Sharp

Dialysis

936-760-3333 Davita 20 Sloop 336 ✓

832-442-2500 - Dialyspa 27172  
Facility I45, TW  
Palm → Seminole

Needs

Walkers

O<sub>2</sub> Concentrators

Diapers

Pharma

Dialysis

Social work

Docs -

TriCo - intake open  
w/ space  
- counselors @  
L500



---

**I WANT ACTION!!!**







POLICE  
ROCKPORT

LEFT TURN  
YIELD  
ON GREEN

END  
SCHOOL  
ZONE

35

TEXAS  
GFM-7082



---

**YES . . . THAT KIND  
OF ACTION!!  
(WRONG AGAIN)**







Y'all gonna be fine

Unlocked

District 12

SEPTEMBER

MEET	Meeting
ANNY	Scan

25- [unclear]  
41- [unclear]  
46- [unclear]  
31- [unclear]

6x6's [unclear]  
6x7's [unclear]  
6x8's [unclear]

OU

dao

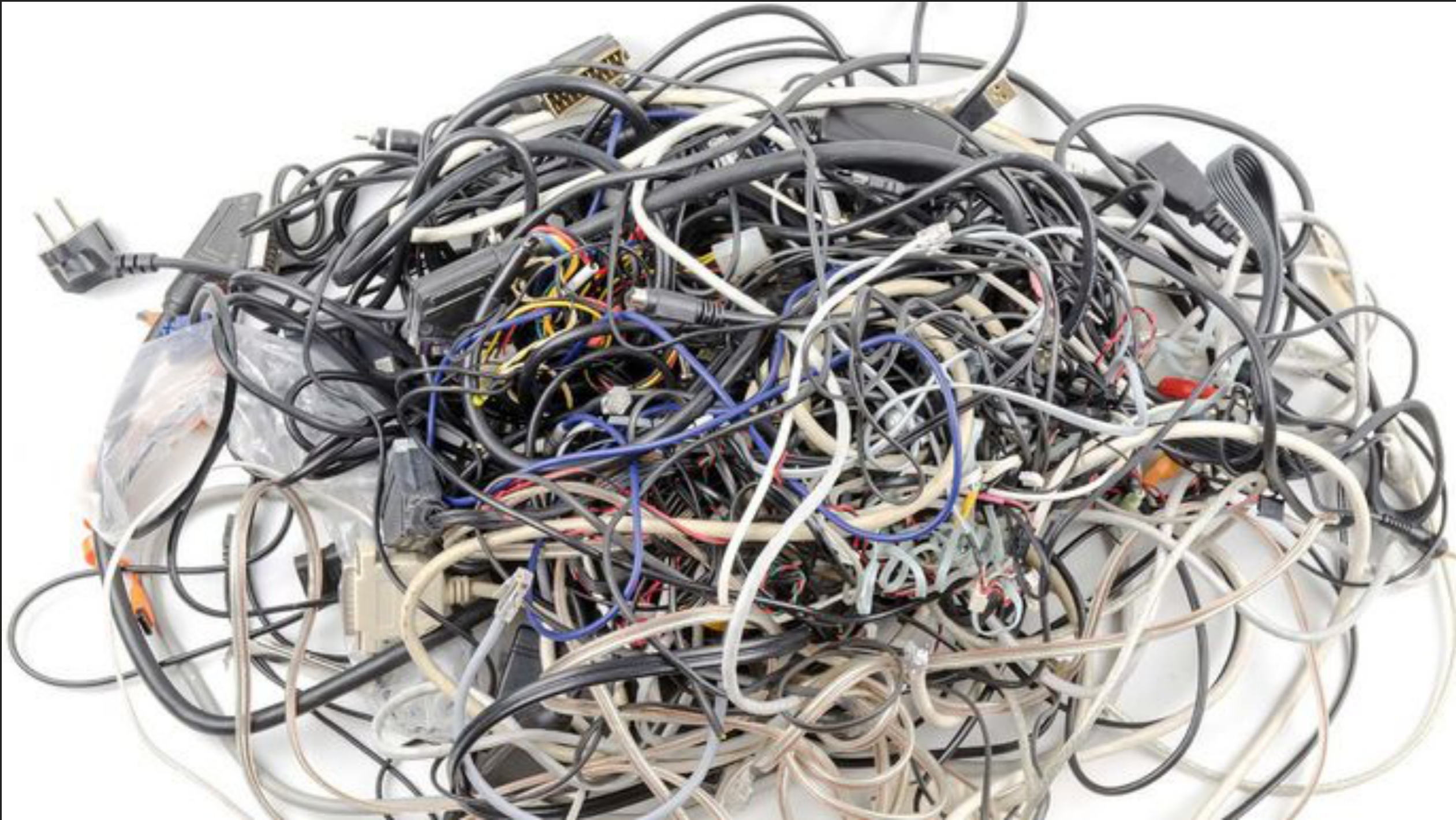
Kentucky  
504 GZD

MIC  
E

---

# WHAT WE HAVE HERE.....



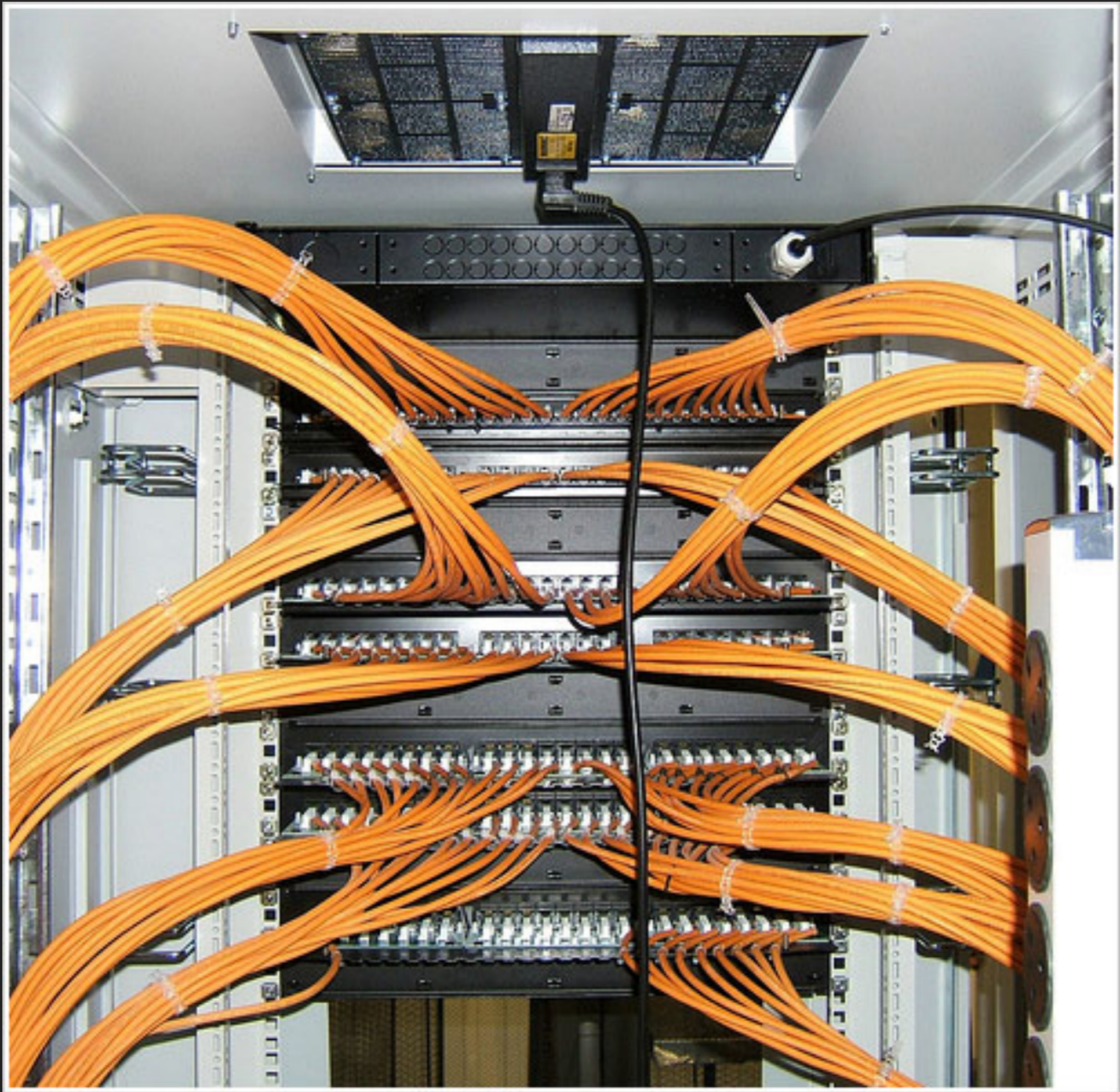


---

**NIMS?**

**EOC?**

**CMOC?**





---

**DON'T BE A SILLY  
TRIAGE DOC!**



---

**WHO ELSE KNOWS  
HOW TO DO MORE  
WITH LESS???**





---

**UNEXPECTED  
DEATH... I'M AN  
EXPERT**



---

# LESSONS LEARNED?

- ▶ Communication is KEY
- ▶ We excel at doing “Dirty Work”
- ▶ Nobody can triage like we can
- ▶ Nobody can do more with less
- ▶ Expect the unexpected



---

# ANY QUESTIONS...

